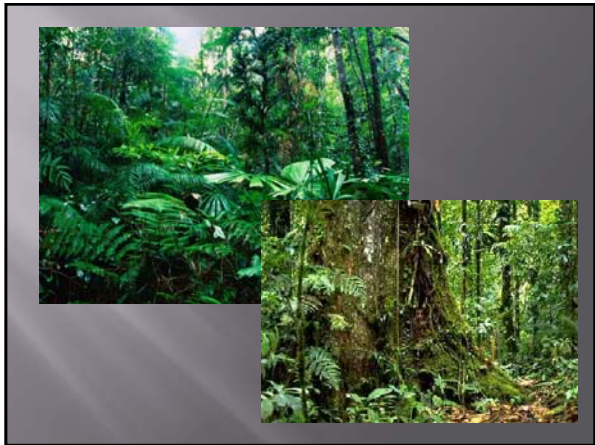
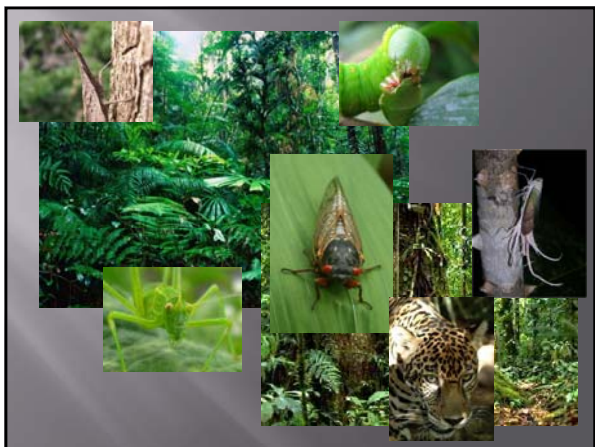
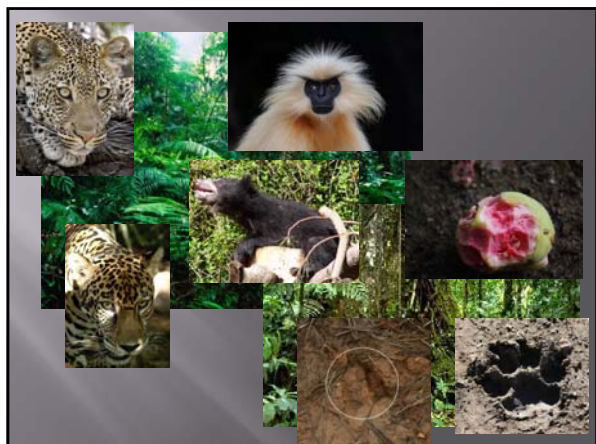


ANIMALS OF THE TROPICAL RAINFOREST







When?

- ❑ Terrestrial invertebrates: day and night
- ❑ Aquatic invertebrates: night
- ❑ Fishes: day and night
- ❑ Amphibians: sunset and night
- ❑ Crocodylians: night
- ❑ Turtles: day
- ❑ Lizards: sunny hours - day
- ❑ Snakes: night, morning, afternoon
- ❑ Birds: early morning (5-10AM), afternoon (2-6PM)
- ❑ Mammals: night

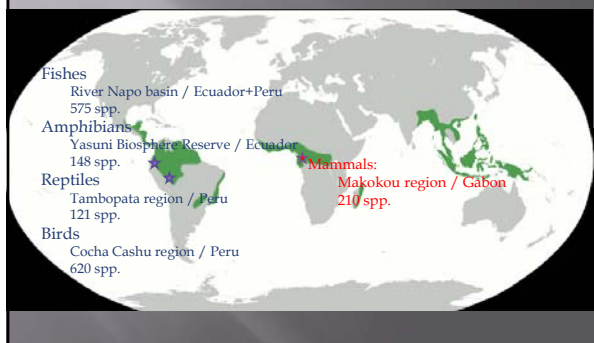
How many?

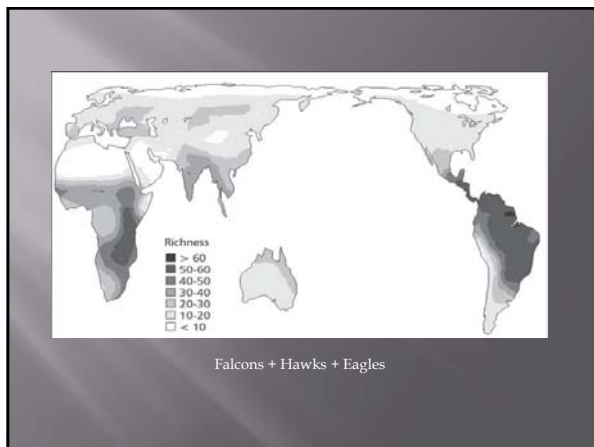
- ❑ For vertebrate animals: twice as many in tropical as temperate
- ❑ For invertebrate: twice to 10 or 30 times

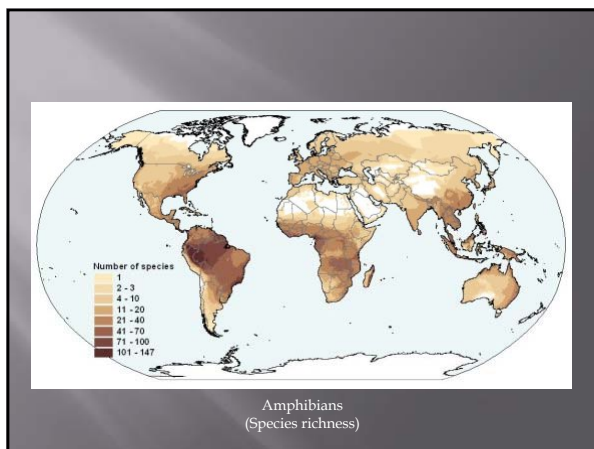
- ❑ Estimates: 5 to 30 million species

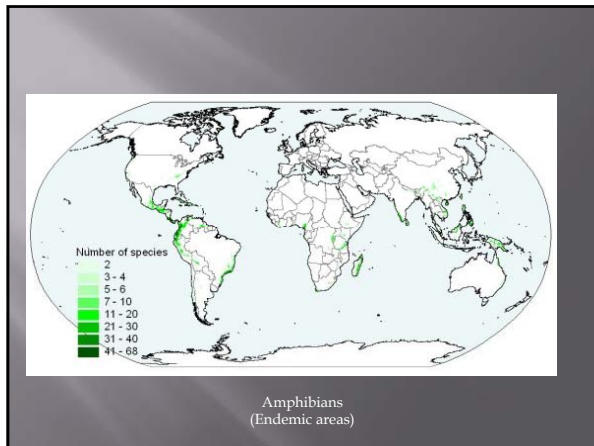
- ❑ Richest areas – Amazonia
- ❑ Less diversity in Asia and the lowest in Africa

Highest Species Concentration















- Primate biomass:
 - Africa 2 tonne/km²
- Primates Africa and Asia
 - Folivores (leaf-eaters)
 - Larger species
- Primates America
 - Frugivores (fruit-eaters)
 - Insectivores
 - Smaller species
- Primate troops
 - Africa and America: mixed-species
 - Asia: single species

Frugivores

- America, Asia, Africa: Primates + birds
- Oceania: Birds + Bats
 - New Guinea
 - One frugivore mammal: Tree-kangaroo

The block contains three photographs of frugivores. On the left is a tree-kangaroo, a marsupial that can climb trees. In the middle is a brown bear sitting on a tree branch. On the right is a gibbon hanging from a tree branch.

